



Defender Cab™ Owner's Manual

Fits cabs for:

-Kioti Mechron

Caution:

Before using this product, read this manual and follow all safety instruction



Roof Console with Heater, Switches, Dome light & Optional Radio kit

- Safety Instructions
- Kit Contents
- Tool Requirement
- Assembly Instructions
- Additional Notes

* Defender cabs and accessories are in no way affiliated with Kioti. Any use of these or there model name(s) is only to identify their Tractors as it pertains to our accessories.

Warning: Failure to heed all safety and operating instructions and / or warnings regarding use of this product can result in serious bodily injury.

SAFETY INSTRUCTIONS

Read entire assembly instructions prior to commencing work.

Install all parts indicated in assembly instructions. Failure to fully assemble product before use could result in personal injury.

Assembly of product requires use of hand and/or power tools. If you are not experienced in using these types of tools, have product dealer do the installation for you.

Some parts contain sharp edges; wear protective gloves if necessary.

Dress for safety. Do not wear loose clothing, neckties or jewelry if using power tools to assemble this product.

Always keep your assembly area clean, uncluttered and well lit.

Keep visitors and children a safe distance away from the assembly area. Visitors should wear the same safety equipment described above.

Additional Safety Note(s):

Some installation steps require that some parts that pertain to mechanical devices be removed or temporarily removed. By choosing to perform these steps, you are doing so at your own risk and accept full responsibility should these devices fail due to your tampering with them. Please consider the full extent of possible repercussions when choosing to remove Ignitions, water pump parts etc.

Console Heater Kit Contents

Your **Defender™ Cab Console Kit** should contain the parts listed below. Separate all parts from packing materials. Do not discard packing material until assembly is complete. Item quantities are listed in parenthesis below. Note: Items listed below may or may not be included based on selected options or may be installed on panels before shipping.

Console Panel

- (1) 29013... Main console assembly
- (1) 20115... Radio kit (option)

Hardware

- (22ft) 11143... 1/2" i.d heater hose
- (4) 11144... 1/2" hose clamp for 1/2" hose
- (12ft) 11146... 1/4" wire loom
- (20) 11091... 11" cable tie

*NOTE: Cab enclosure Hardware bag contains items used for the console option. Some items may or may not be used in this application.

Tools Required for Assembly

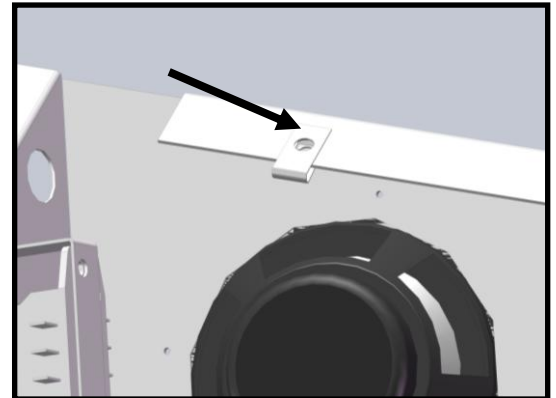
Ensure that you have the following tools available before you begin the assembly of your **Defender Cab™** Enclosure Kit. *** ***Assembly May require an assistant******

NOTE: Stainless Steel hardware **WILL** gall (seize) without use of anti-seize compound

- | | |
|--------------------------------------|------------------------------------|
| • Phillips & Flat screwdrivers | • Utility clamps (Suggested) |
| • 1/8" and 5/32 Allen Key (provided) | • Anti-Seize Compound or Lubricant |
| • Electric drill | • Side cutters |
| • Utility knife | |

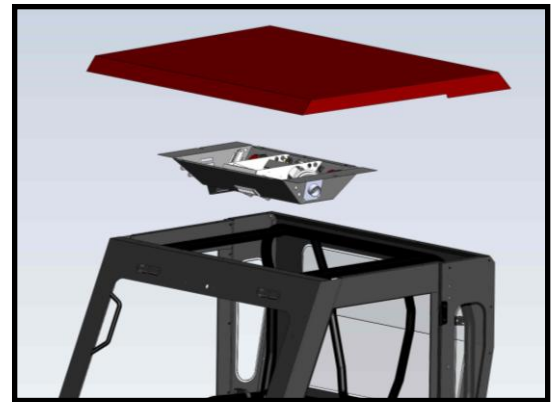
i) 3x 3/4", 1/4-20 SS Button head, and rubber washer are used to hold console in the middle of the roof. Use 3x 1/4-20 U-type nuts on console inner lip fig.1.

Fig.1



ii) The console drops on top of the cab before dropping the roof fig.2. The front lip sits on top of the front panel and the sides on top of the roll bar.

Fig.2



iii) Run 2x 1/2" heater hoses to the water pump by-pass fig.3/fig.4. Use tie straps to fix hose along roll cage. Remove short by-pass hose and attach 1/2" heater hoses. **Secure heater hose so to not rub against any sharp edges.**

Fig.3

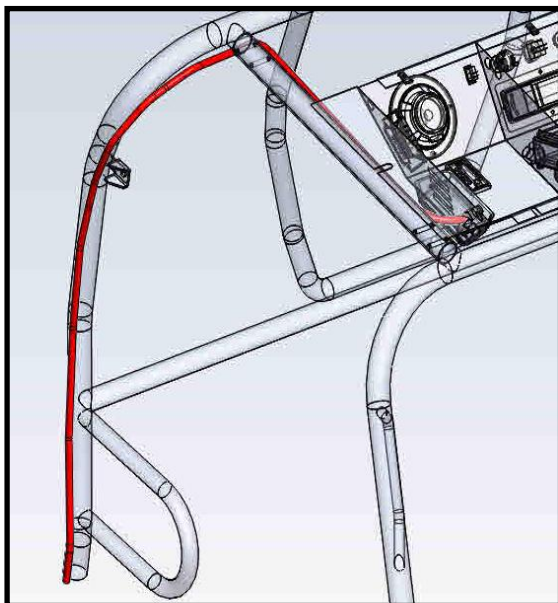


Fig.4



iv) Use wire loom to protect live and ground wire from damage. No instruction is provided to hook up power to ignition. Only a certified technician should tamper with ignition. Wires can be hook directly to battery but this might cause battery to drain if accessory is left on. Ground wire can be grounded on the cab.

v) The wiper if added as an option can be hooked to the 3 coloured wires from the console and grounded on the cab.

vi) Once all Hoses are installed and secure. Take radiator cap off and start the Tractor. Fill up with recommended coolant and fill the overflow. As tractor coolant is pumped true the system and fills the heater hoses you will need to keep filling the radiator with coolant. You will see air bubbles come out and coolant will drop in radiator. When you don't see air bubbles anymore you can put the cap back on and take the tractor for a spin. Let the tractor cool down until it's safe to remove radiator cap and then fill with coolant again. Check coolant level after tractor cools a few more times.

Never remove radiator cap when tractor is hot!!!!

Additional Note(s):

- a) Visit *Defendercab.com* regularly for updates and newly added items to fit your Tractor cab. .
- b) Hooking up power to ignition is recommended, that way added components won't drain battery when tractor is turned off if accessory is left on. Only Authorized dealers should tamper with tractor's electrical components.

To order replacement parts, contact the Parts Department at:

LB Manufacturing Inc.

247 Arsenault Road, Dieppe,

N.B. Canada E1A 7J5

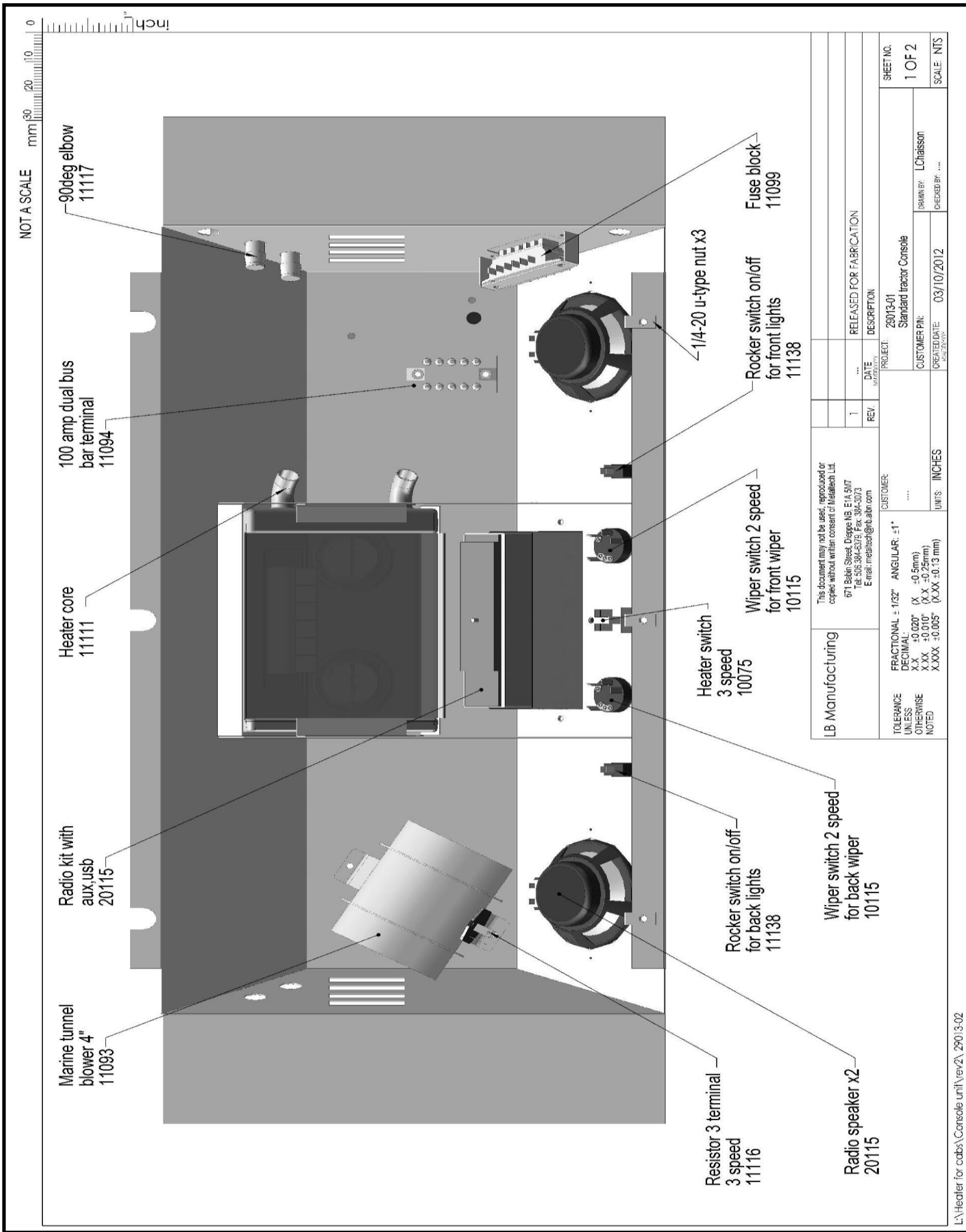
Ph: (506) 388-3335 Fax (506) 388-3325

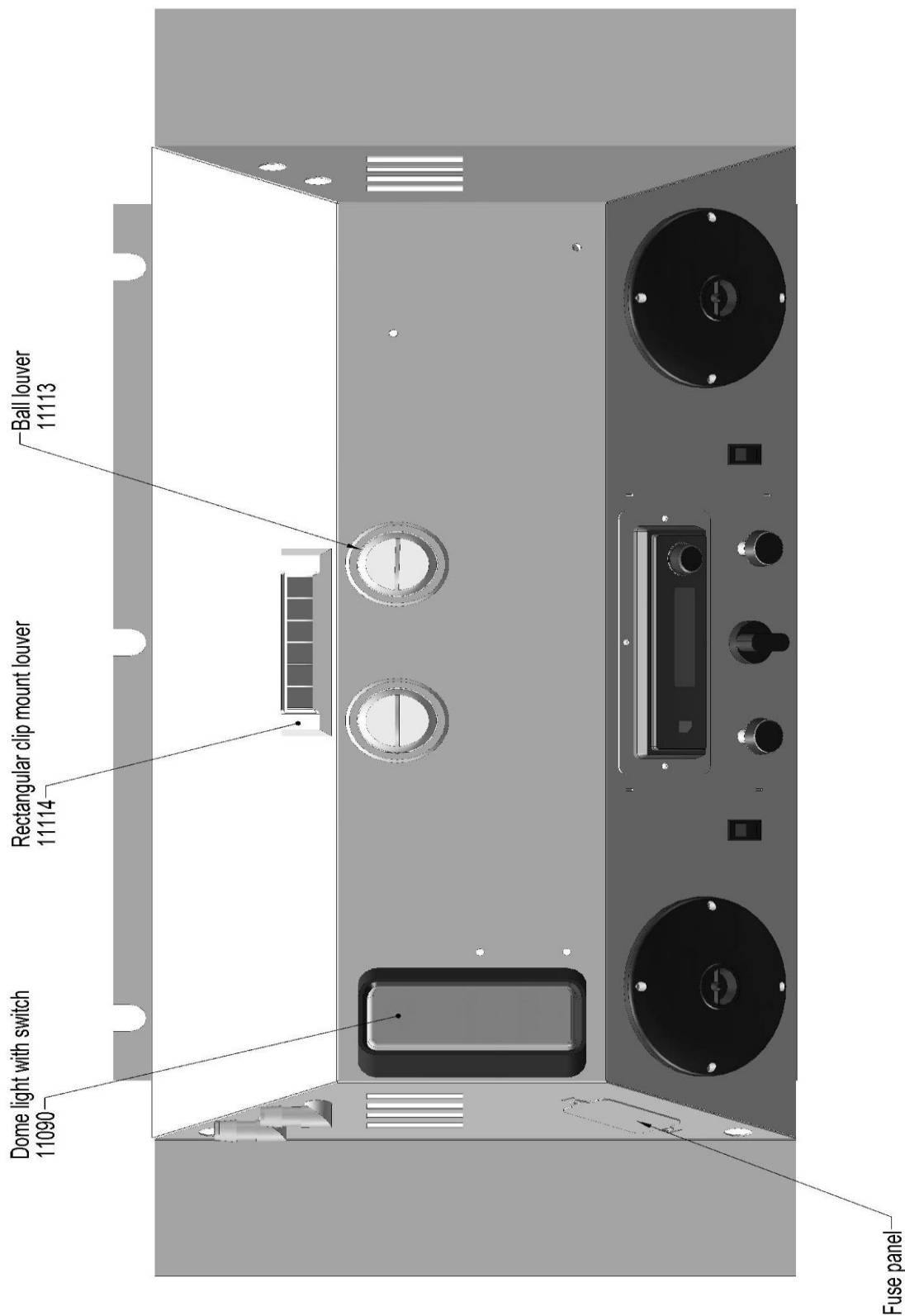
Toll Free: 1-877-380-3335

www.beaverpro.com

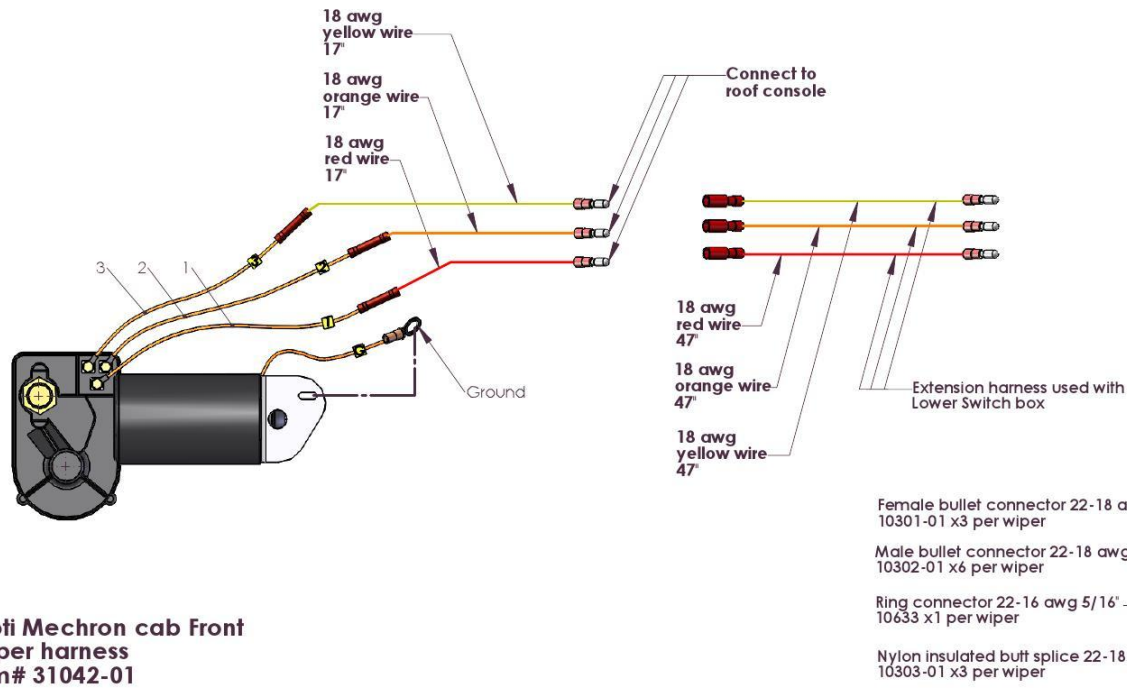
info@beaverpro.com

Manual Revision: 1.1





PROJECT:	29013-02	SHEET NO. 2 OF 2
		SCALE: 1:2



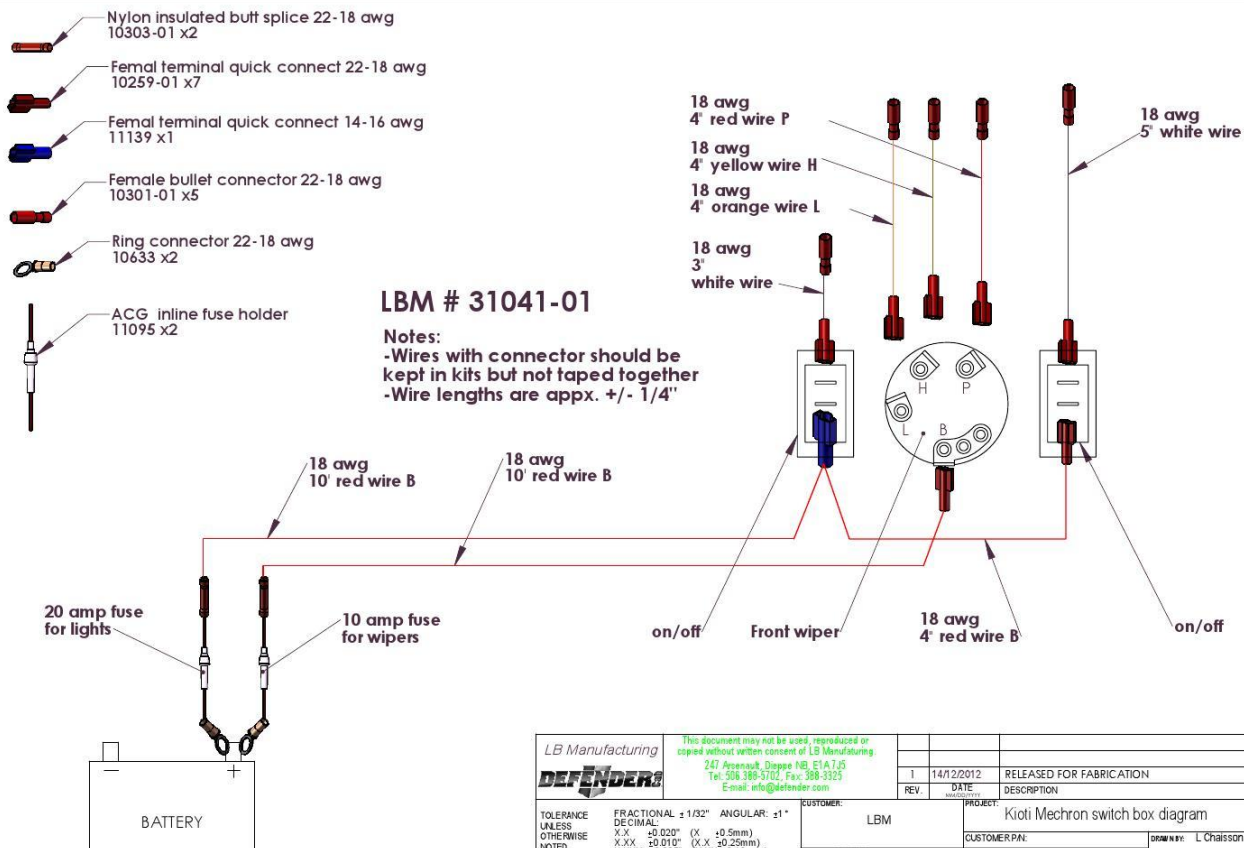
Kioti Mechtron cab Front Wiper harness lbm# 31042-01

Notes:

- Wires with connector should be kept in kits but not taped together
- Wire lengths are appx. +/- 1/4"
- Make sure to properly ground to cab. Remove a bit of powder coat to get metal to metal contact

LB Manufacturing DEFENDERS		This document may not be used, reproduced or copied without written consent of LB Manufacturing. 247 Arsenal, Dover DE 19715 Tel: 308-389-5702, Fax: 308-3325 E-mail: info@lbdefender.com	
TOLERANCE UNLESS OTHERWISE NOTED	FRACTIONAL DECIMAL: ± 1/32"	ANGULAR: ± 1°	
	X.X ±0.020" (X ±0.5mm)	X.XX ±0.010" (X.X ±0.25mm)	
	X.XXX ±0.005" (X.XX ±0.13mm)		
CUSTOMER: LBM		PROJECT: Kioti Mechtron wiper harness	
UNITS: INCHES		SHEET NO. 1 OF 1	
CREATED DATE: 23/04/2012		SCALE: NTS	
REV. 1		DATE 13/12/2012	
		DESCRIPTION RELEASED FOR FABRICATION	
		DRAWN BY: L. Chaisson	
		CHECKED BY: ...	

L:\LBM HARDWARE LIBRARY\Wing Harness\Kioti Mechtron\ Kioti Mechtron Wiper elec. diagram



LB Manufacturing DEFENDERS		This document may not be used, reproduced or copied without written consent of LB Manufacturing. 247 Arsenal, Dover DE 19715 Tel: 308-389-5702, Fax: 308-3325 E-mail: info@lbdefender.com	
TOLERANCE UNLESS OTHERWISE NOTED	FRACTIONAL DECIMAL: ± 1/32"	ANGULAR: ± 1°	
	X.X ±0.020" (X ±0.5mm)	X.XX ±0.010" (X.X ±0.25mm)	
	X.XXX ±0.005" (X.XX ±0.13mm)		
CUSTOMER: LBM		PROJECT: Kioti Mechtron switch box diagram	
UNITS: INCHES		SHEET NO. 1 OF 1	
CREATED DATE: 23/04/2012		SCALE: NTS	
REV. 1		DATE 14/12/2012	
		DESCRIPTION RELEASED FOR FABRICATION	
		DRAWN BY: L. Chaisson	
		CHECKED BY: ...	

L:\LBM HARDWARE LIBRARY\Wing Harness\Kioti Mechtron\ Kioti Mechtron switch box harness