

DEFENDER^{cab}™



Defender Cab™ Owner's Manual

Model:

Honda Big Red

Caution:

Before using this product, read this manual and follow all safety instruction



For Honda Big Red

- Safety Instructions
- Kit Contents
- Tool Requirement
- Assembly Instructions
- Additional Notes

* Defender cabs and accessories are in no way affiliated with Honda. Any use of these or there model name(s) is only to identify their vehicle as it pertains to our accessories.

Warning: Failure to heed all safety and operating instructions and / or warnings regarding use of this product can result in serious bodily injury.

SAFETY INSTRUCTIONS

Read entire assembly instructions prior to commencing work.

Install all parts indicated in assembly instructions. Failure to fully assemble product before use could result in personal injury.

Assembly of product requires use of hand and/or power tools. If you are not experienced in using these types of tools, have product dealer do the installation for you.

Some parts contain sharp edges; wear protective gloves if necessary.

Dress for safety. Do not wear loose clothing, neckties or jewelry if using power tools to assemble this product.

Always keep your assembly area clean, uncluttered and well lit.

Keep visitors and children a safe distance away from the assembly area. Visitors should wear the same safety equipment described above.

NEVER OPERATE YOUR VEHICLE WITH THE CAB DOORS OPEN. FAILURE TO PROPERLY LATCH THE DOORS PRIOR TO MOVING THE VEHICLE COULD RESULT IN SERIOUS INJURY.

Additional Safety Note(s):

Some optional installation steps require that some fasteners pertaining to safety devices be temporarily removed. By choosing to perform these steps, you are doing so at your own risk and accept full responsibility should these safety devices fail due to your tampering with them. Please consider the full extent of possible repercussions when choosing to remove any safety device such as nets, safety belts and ROPS.

Cab Enclosure Kit Contents

Your **Defender™ Cab Enclosure Kit** should contain the parts listed below. Separate all parts from packing materials. Do not discard packing material until assembly is complete. Item quantities are listed in parenthesis below. Note: Items listed below may or may not be included based on selected options or may be already installed.

Panels, Doors and Brackets

- (1) 30002 Back panel assy.
- (1) 30003 Roof panel assy.
- (1) 30004 Driver side rear panel assy.
- (1) 30005 Pass. side rear panel assy.
- (1) 30006 Driver mounting plate
- (1) 30007 Pass. mounting plate
- (1) 30008 Driver a-pillar panel assy.
- (1) 30009 Pass. a-pillar panel assy.
- (1) 30010 Upper driver crossmember
- (1) 30011 Upper pass. crossmember
- (2) 30012 Hinge mounting bracket
- (2) 30013 Mounting bracket
- (1) 30014 Driver fender bracket
- (1) 30015 Pass. fender bracket
- (8) 30016 Hinge mount backplate
- (1) 30051 Passenger rear vent
- (1) 30052 Driver rear vent
- (1) 30066 Driver fender bracket
- (1) 30067 Pass. fender bracket
- (2) 30076 Driver/pass. striker mount
- (1) 30083 Driver door assy.
- (1) 30084 Pass. door assy.

Hardware

- (1) 30090 Hardware bag*
- (2) 11124 Edge trim 5/8" end bulb 30" long
- (6.5ft) 10689 Edge trim 7/16" end bulb for back panel
- (22ft) 10059 Large protective trim
- (1) 10045 Left inside latch c/w bolt
- (1) 10093 Right inside latch c/w bolt
- (2) 10048 Push button outside handles
- (2) 10607 Left lift off hinge
- (2) 10606 Right lift off hinge
- (1) 10106 roll soft gasket
- (6) 11125 Cusion clamp 1 3/4"

*NOTE: Hardware bag contains spare items. Some items may or may not be used in this application.

Tools Required for Assembly

Ensure that you have the following tools available before you begin the assembly of your **Defender Cab™** Enclosure Kit. *** **Assembly May require an assistant*****

NOTE: Stainless Steel hardware **WILL** gall (seize) without use of anti-seize compound

- Phillips & Flat screwdrivers
- 1/8" and 5/32 Allen Key (provided)
- Metric/Standard wrench and socket sets
- 5/16" drill bit
- Utility knife
- Utility clamps (Suggested)
- Rubber Mallet (Suggested)
- Anti-Seize Compound or Lubricant
- Side cutters

Kit Installation

1. Panel Preparation and installation

i) Remove OEM doors, keep original bolts, they will be used to install brackets

***Its Advised to keep all removed fasteners in an empty container and or label them with masking tape**

ii) Install the 4 fender brackets, 30014 shown, 30015 fig.1, 30066 shown, 30067 fig.2. Use existing bolts to fasten bracket 30014 and 30015, Leave them loose for in and out adjustment.

Fig.1

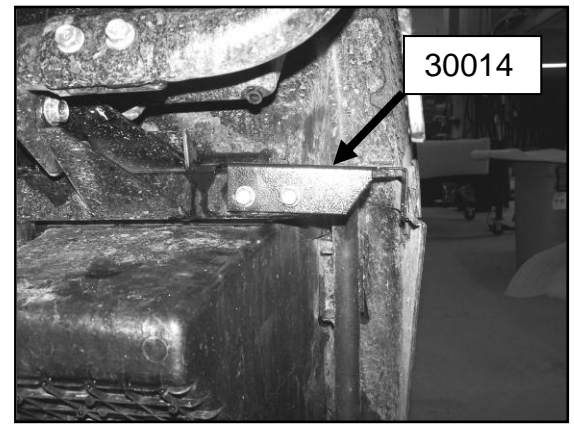


Fig.2

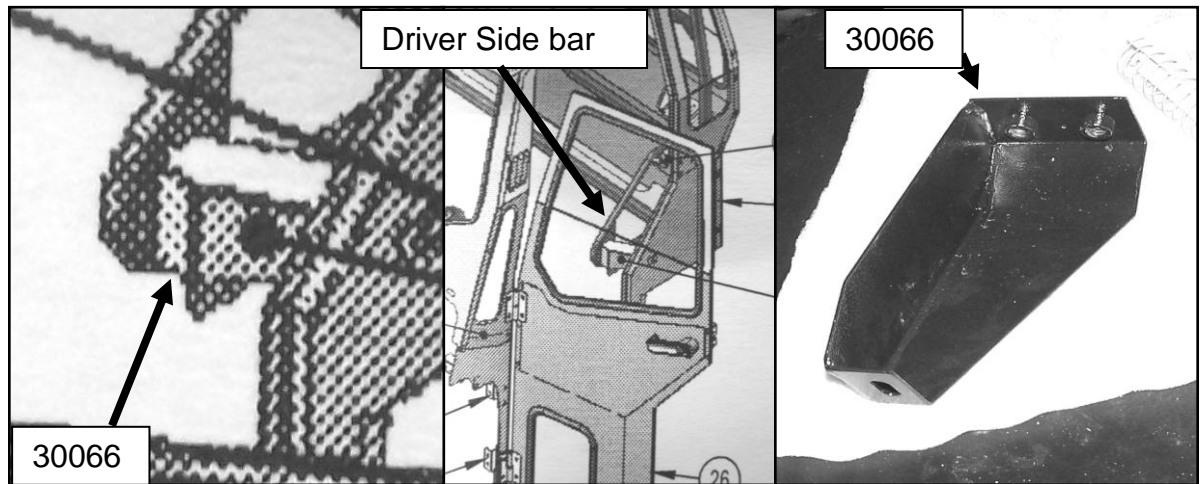
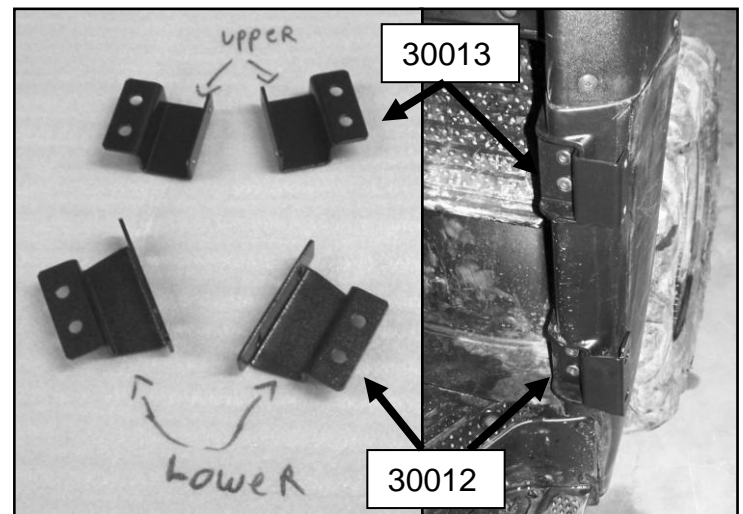


Fig.3

iii) Install the hinge mounting brackets 30012 and mounting bracket 30013 on driver and pass. sides. Use same fasteners that where removed from the OEM doors.



iv) Install Driver/Pass. mounting plate 30006 and 30007 fig.4. Use hinge back plate 30016 with 2x 1/2" 1/4-20 phillip flat head screws for hinges fig.5. Use 2x 1/2" 1/4-20 hex button head with washer to attach to upper mounting bracket and 1x 3/4" 1/4-20 hex button head with washer and lock nut to attach to fender bracket fig.7. Fender bracket can now be tighten fig.8.

Fig.4

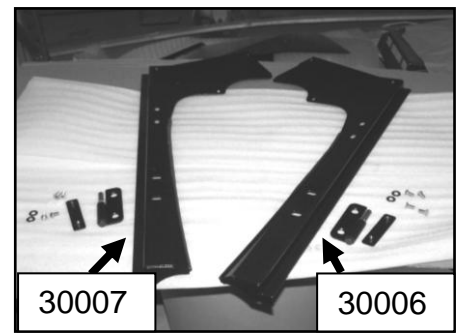


Fig.5



Fig.6

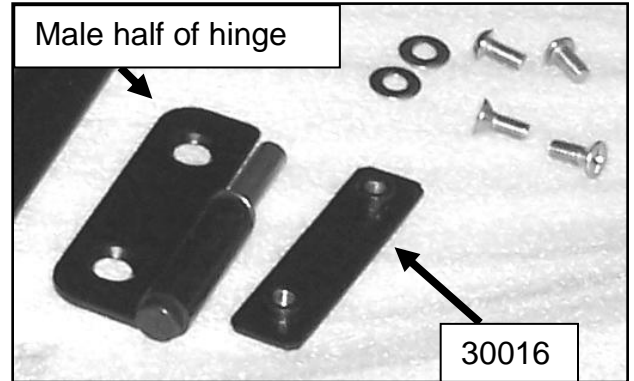
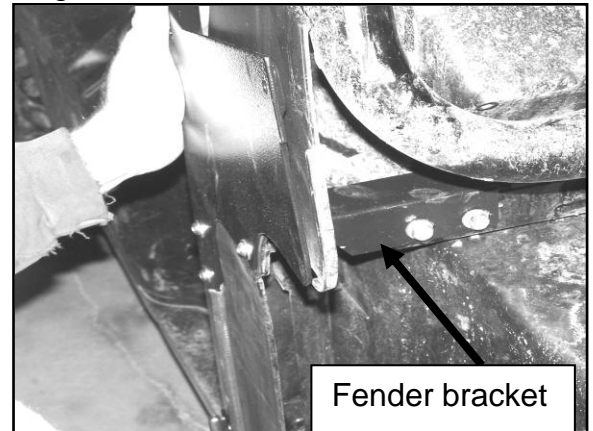


Fig.7



Fig.8



v) Install Driver/Pass. a-pillar panels. Use 2x 1/2" 1/4-20 hex button head with washer fig.9 and fig.10 .Do not over tighten the fastener towards the front of the bike on both sides they also hold the front panel . Install Male upper hinges on a-pillar Panel.Use same plate and fasteners as lower hinge.

Fig.9

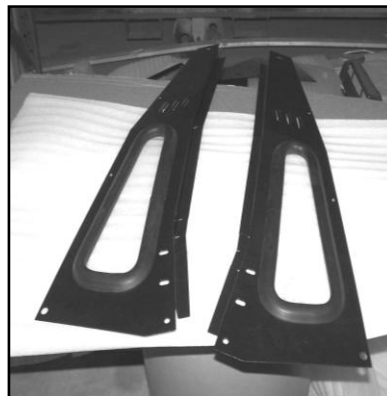


Fig.10



vi) TWO persones will be needed to position the windshield panel. The outside lip overlaps a-pillar panel, so remove the lower corner front fastener and attach the front also .Before fastening the rest, use a black marker to map out where the panel follows the bikes profile, remove the panel and run 3/4" wide 1/2" thick stick on soft foam (supplied) center with the drawn line. You can now position the front panel and ad the two shown fasteners in fig.11.

Fig.11



vii) Before attaching the back panel, add 7/16" end bulb moulding (provided) fig.12. Install the two rear vent louvers 30051/30052. Put a 1/4" washer first on each stud fig.13 then add the vent plate. Add another washer a lock nut and tighten all four nuts equally just enough until the plates can't move by Themselfs . Position 6x 1 5/8" tube clamps as shown in fig 14. & fig.15. Use 4x 1/2" 1/4-20 hex button head with washers to fasten the back panel to the 4 bottom clamps fig.15 & fig.16.

Fig.12



Fig.13

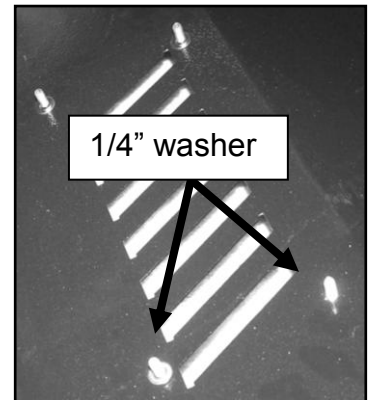


Fig.14

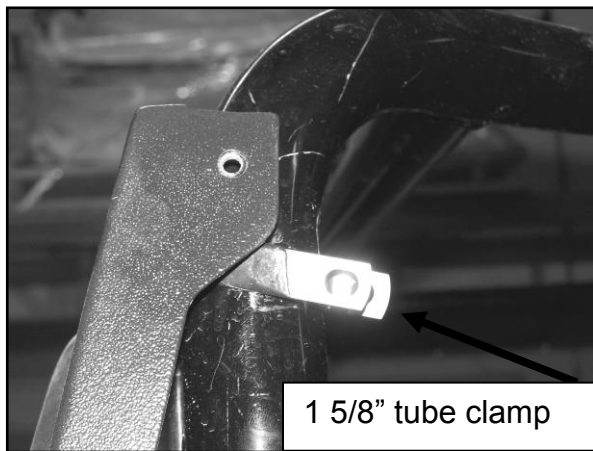


Fig.15

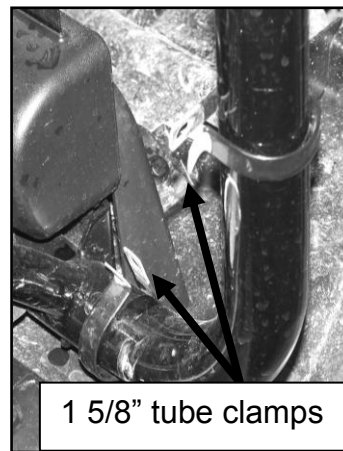


Fig.16



viii) Before installing Driver/Pass. Rear side panel's, Install 5/8" end bulb trim on both panels fig.17. Attach the two side panels to the back panel using 8x 1/4-20 hex button head with washers, same on both sides fig.18. U can now attach upper 1 5/8" clamp to the side panels fig.19

Fig.17

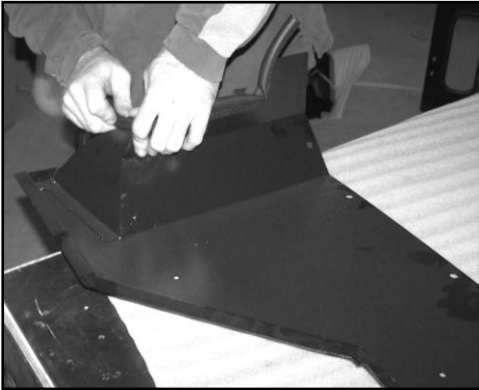


Fig.18

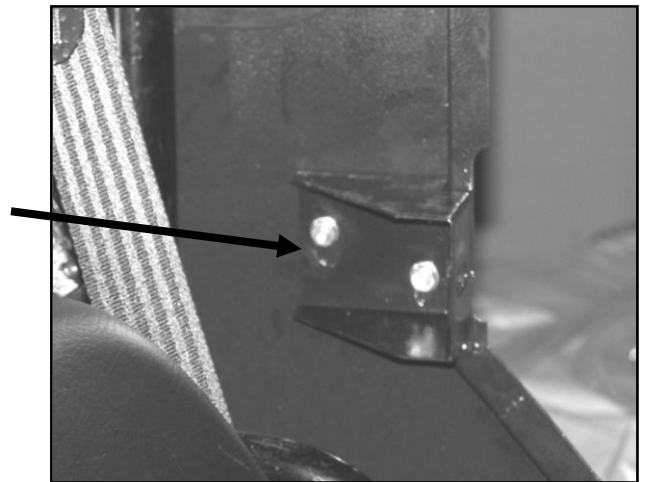


Fig.19



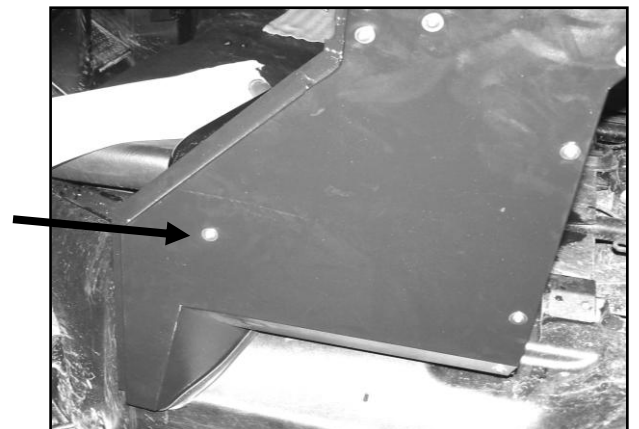
ix) Attach side striker mounts 3x 1/2" 1/4-20 hex button head with washers and nuts fig.20. Leave bolts loose for adjustment later. Attach the yellow zinc latch bolt with large washers on each side of latch box

Fig.20



x) Attach rear side panels to lap bar bracket using 1x 1/2" 1/4-20 hex button head with washer fig.21.

Fig.21



xi) Drop the roof so it over laps all the panels, install 7x 3/4" 1/4-20 hex button head and washers in the back fig.22 and the two end fig.23 and two front ones fig.24.

Fig.22



Fig.23



Fig.24



xii) Install Driver/Pass. upper crossmember using 2x 3/4" 1/4-20 hex button head with washers on each crossmember fig.25. Run large protective trim along the edge of the crossmember and back side panels Fig.25.

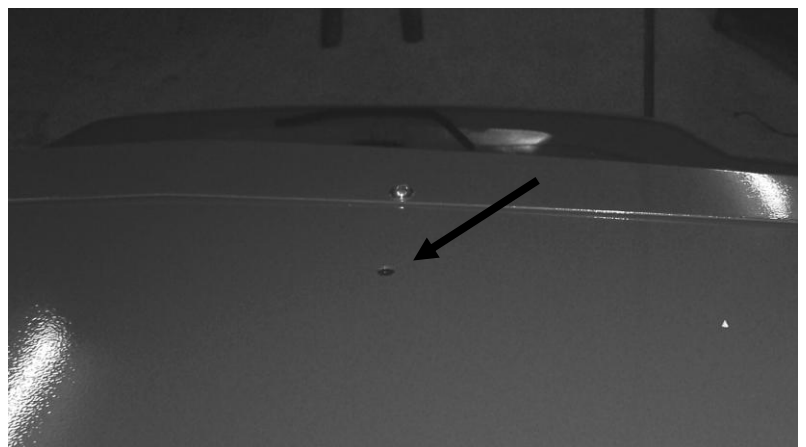
Fig.25



Driver Crossmember

xiii) Fasten the roof to the windshield panel See instruction for radio console before procedding. Use 4x 1/2" 1/4-20 hex button head with rubber coated washers and lock nuts fig.26.

Fig.26



xiv) Install female half of hinges on the doors. 2 hinge mount back plates, 4x 1/2" 1/4-20 phillip flat head screws. Same for both doors. The doors can now be dropped in place and adjusted. Latch bolt bracket will need to be adjusted up and down and latch bolt in and out, so door closes properly with a tight seal. Door might need to be adjusted again to get a proper fit.

xv) If console option is included in kit, drop on top of cab before dropping the roof. See Console/heater installation manual.

xvi) If console is not added, install 3x 1/2", 1/4-20 SS Button head, rubber washer, reg washers and flanged nut in the 3 middle holes of roof.

xvii) Install wiper motor as seen in fig.28. Use 10-32 ss button head with lock nut.
Do not push wiper arm on motor's shaft all the way until it's at the right angle for maximum wipe. Once it pushed all the way in it's extremely hard to take back off
Adjustment to wiper sweep angle and "home" position can be made by removing cover and following the manufacturer's instruction printed on box. Run wiring along top incased in wire loom and hang of roof fasteners with plastic clips.

Note: -Motors are normally shipped at maximum sweep angle of 110 deg.
-See wiring diagram for instructions

Fig.27

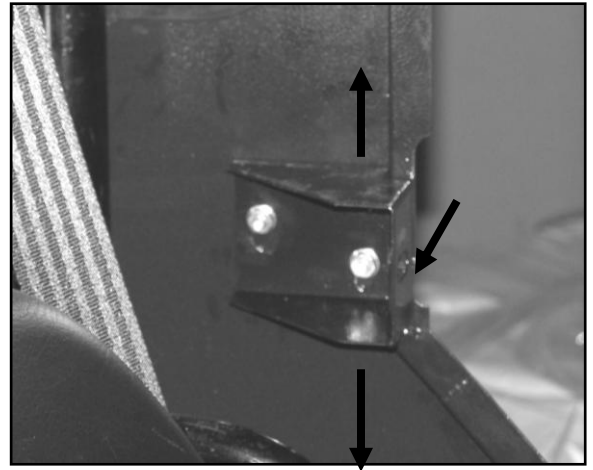
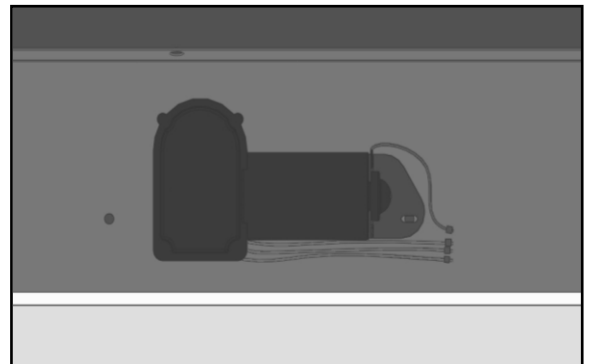


Fig.28



Additional Note(s):

- a) Removal of belts and/or nets is not recommended as this cab enclosure is **not** designed as a roll over protection system. Always wear proper safety gear while riding your UTV.
- b) To remove doors lift up on doors
- c) Visit *Defendercab.com* regularly for updates and newly added items to fit your UTV cab.
- d) Wash enclosure with soapy water as you would any other vehicle.
- e) Hooking up power to ignition is recommended, that way added components won't drain battery when UTV is turned off if accessory is left on. Only Authorised dealers should tamper with UTV's electrical components.

L.B. Manufacturing Inc - Bill of Material

2012 Honda Big Red hardware bag

30090-01

As of Dec 2,
2012

Description	Fastenal part #	Unit	Qty
#10-32 Nyloc Nut, Stainless, 18-8	70858	Ea.	8
#10 Flat Washer 18-8	71009	Ea.	25
1/4-20unc x 5/8" lg Flat Head Phillips screw, 18-8	72706	Ea.	16
1/4-20unc x 1/2" lg button head socket cap screw, 18-8	73752	Ea.	70
1/4-20unc serrated flanged nut, ZnPL	37337	Ea.	19
1/4" nom flat washer, 18-8	71013	Ea.	70
5/16-18unc x 1/2" lg serrated hex flanged bolt, Gr5 Zn	11104695	Ea.	4
#8x 3/4" lg hex washer self drilling screw, #2pt	32058	Ea.	4
1 5/8" Gavl steel, .281" hole EPDM lined clamp	708816	Ea.	6
Ruber Washers .29"ID .68"OD/ 1/4" Galvanized Bonded Sealing Washer	33155	Ea.	5
1/4-20unc 3/4" lg button head socket cap, SS	73754	Ea.	4

To order replacement parts, contact the Parts Department at:

LB Manufacturing Inc.

247 Arsenault Road, Dieppe,

N.B. Canada E1A 7J5

Ph: (506) 388-9334 Fax (506) 388-3325

Toll Free: 1-877-380-3335

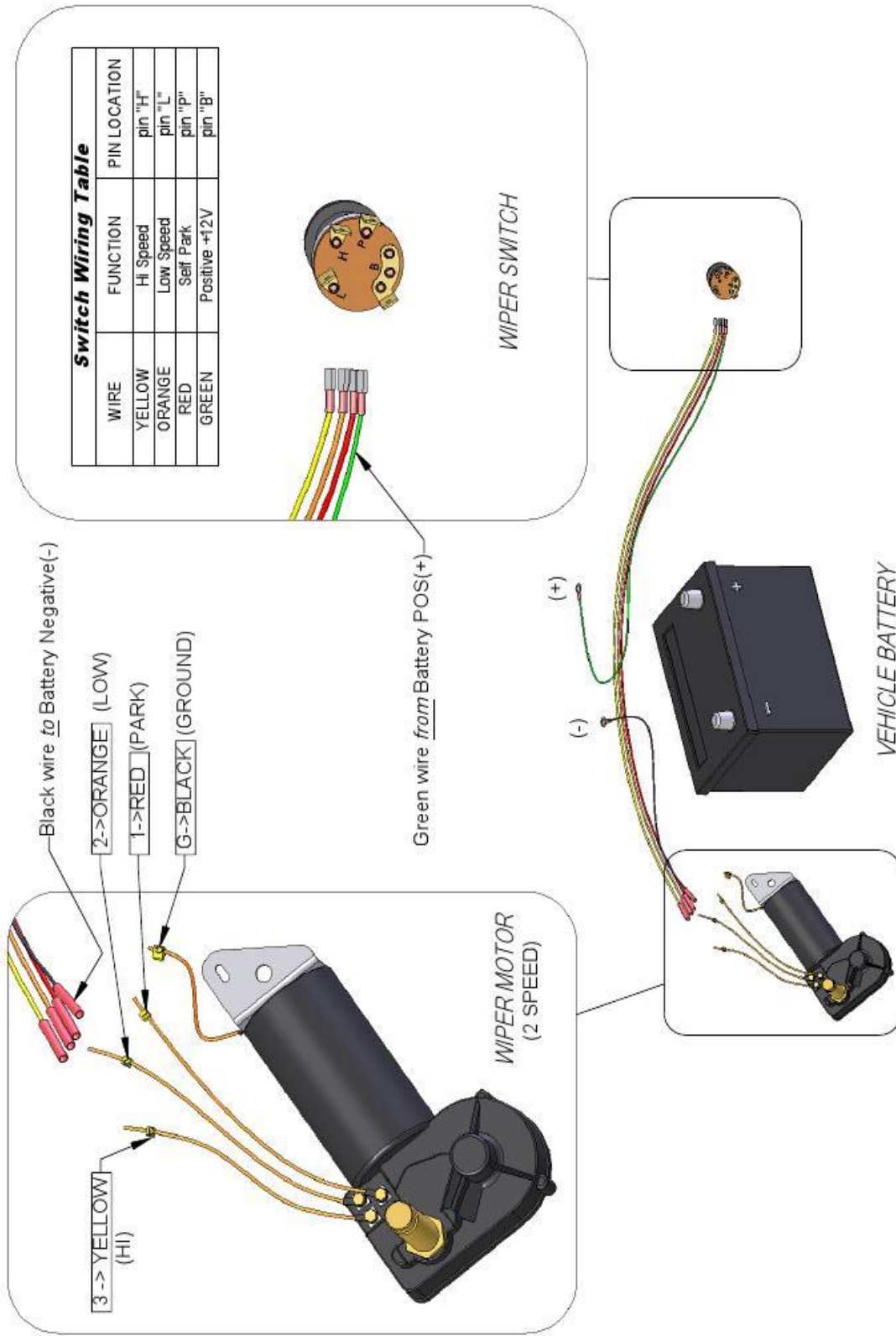
www.defendercab.com

parts@defendercab.com

Manual Revision: 1.0

Date: 3 Dec, 2012

WIPER MOTOR WIRING INSTRUCTIONS



-Rev. 1.3- 19 Nov 2009